

CALS Faculty Meeting 1 Feb 2011

I. CALS overview and update

- Rieger - enrollment, budget, strategic planning
- Turner – undergrad programs & faculty development
- Wysocki – grad programs, DE
- Emerson – recruiting
- Carr – alumni, career services

II. Comments, concerns, questions from faculty

CALS Update

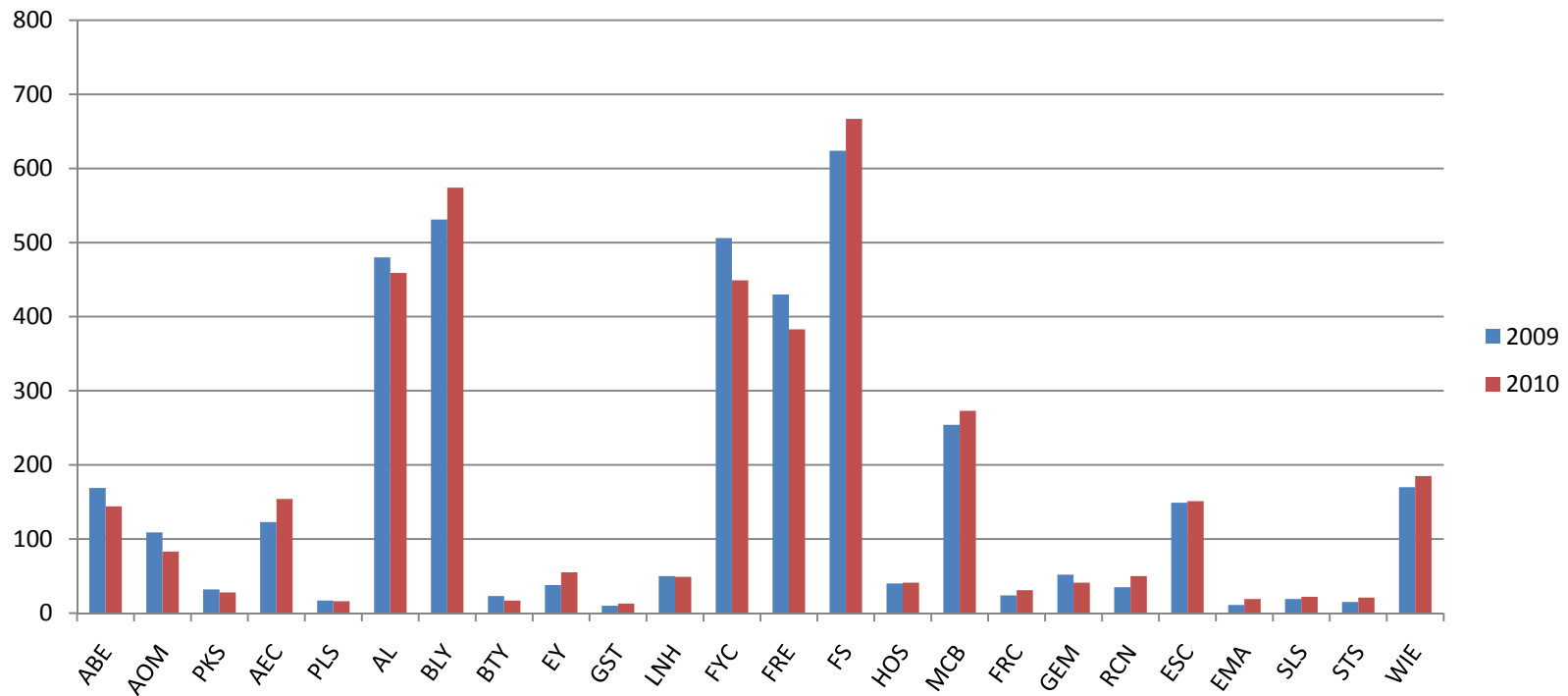
Enrollment

- Undergrad: 4120
- Grad: 1200 **5320**
 - 4th largest College of Ag & related sciences in country
 - 2nd largest graduate program in country

CALS Update

Undergrad enrollment trend by major

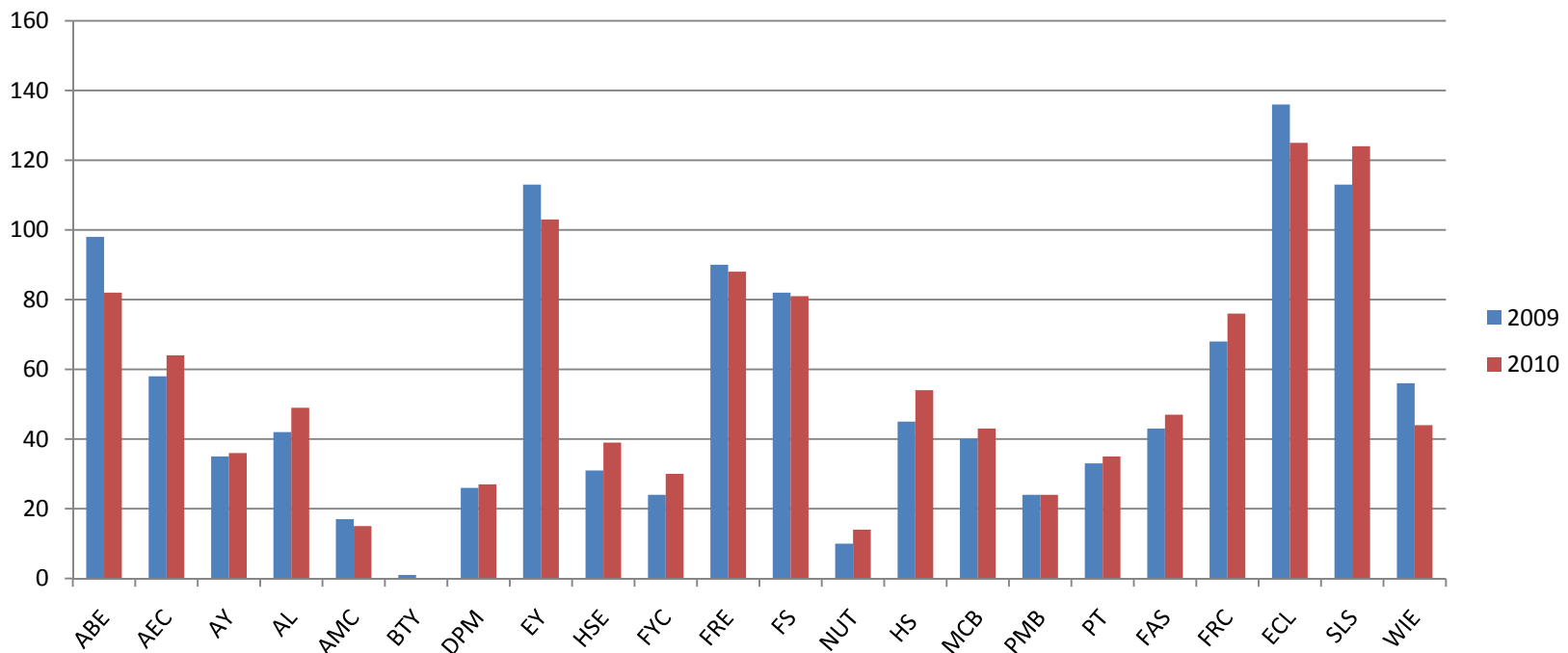
- 24 majors; 9 up, 4 steady, 11 down



CALS Update

Grad enrollment trend by major

- 22 majors; 11 up, 5 steady, 6 down



CALS Update

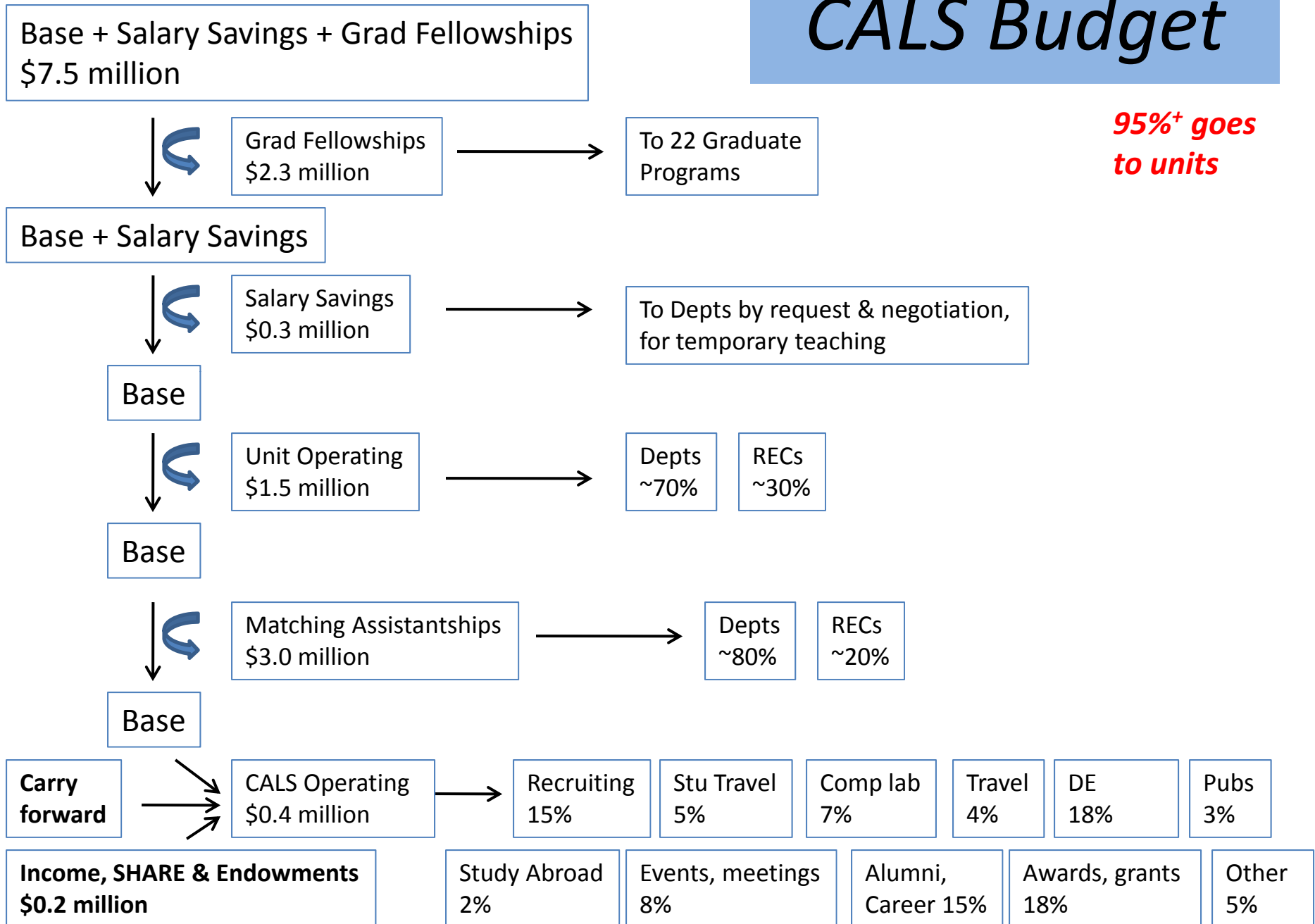
RCM, SCH

- CALS 09-10 = **123,139 SCH, ~9.3% of UF**
- Weighted SCH ~ \$\$
Grad programs generate ~20% of credit hours but >50% of budget

Tuition, teaching	Weight	SCH	Weighted SCH
UG lower	1.56	31,412	49,003
UG upper	2.65	68,480	181,472
Grad I (MS)	9.36	10,701	100,161
Grad II (PhD)	12.99	12,546	162,972

CALS Budget

95%+ goes to units



CALS Update

Strategic Planning

- Informed by curriculum enhancement project
- Stamats: Academic Program Marketability Assessment™

*What should CALS look like
10 years from now?*

